

Electrical Data

Maximum Power(W)	220W
Optimum Power Voltage(Vmp)	29.74V
Optimum Operating Current(Imp)	7.40A
Open Circuit Voltage(Voc)	36.62V
Short Circuit Current(Isc)	7.92A
Cell Efficiency (%)	15.35%
Module Efficiency (%)	13.55%
Tolerance Wattage(e.g. +/-3%)	±3%
NOCT	47°C +/-2°C

Benefits

- ☐ High efficiency solar cells with high transmission and textured glass are delivering high efficiency for modules;
- ☐ Bypass diode minimizes the power drop caused by shade;
- ☐ Tempered glass, EVA resin, and weatherproof film, plus aluminum frame for extended outdoor use;
- ☐ Modules independently tested to ensure conformance with certification and regulatory standards;
- ☐ Manufacturing facility certified to ISO 9001 quality management system standards.

Applications

- ☐ On-grid residential roof-tops
- ☐ On-grid commercial/industrial roof-tops
- ☐ Solar power stations
- ☐ Other on-grid applications

Temperature Coefficients

Temperature Coefficients of Isc(%)/°C	+0.04
Temperature Coefficients of Voc(%)/°C	-0.38
Temperature Coefficients of Pm(%)/°C	-0.47
Temperature Coefficients of Im(%)/°C	+0.04
Temperature Coefficients of Vm(%)/°C	-0.38



Monocrystalline Solar Panel

Model :SSA220W-30MD

Components & Mechanical Data

Solar Cell	156*156 Mono
Number of Cell(pcs)	6*10
Size of Module(mm)	1640*990*40
Front Glass Thickness(mm)	3.2
Surface Maximum Load Capacity	2400Pa
Allowable Hail Load	23m/s ,7.53g
Weight Per Piece(KG)	18.6
Junction Box Type	Pass the TUV Certificate
Bypass Diode Rating(A)	12
Cable & Connector Type	Pass the TUV Certificate
Frame(Material Corners,etc.)	40#
Backing (Brand Type)	TPT
Temperature Range	-40°C to +85°C
FF (%)	70-76%
Standard Test Conditions	AM1.5 1000W/m ² 25 +/-2°C

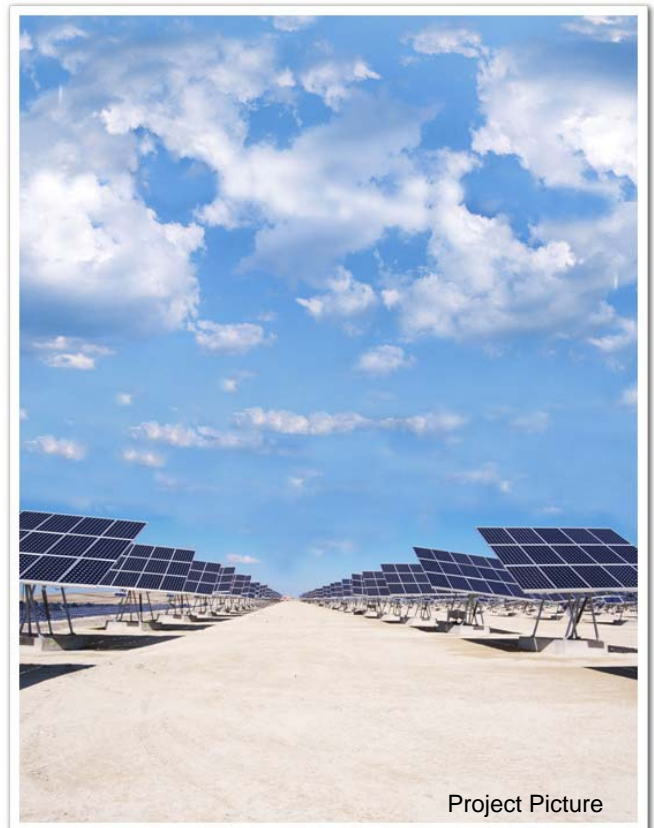
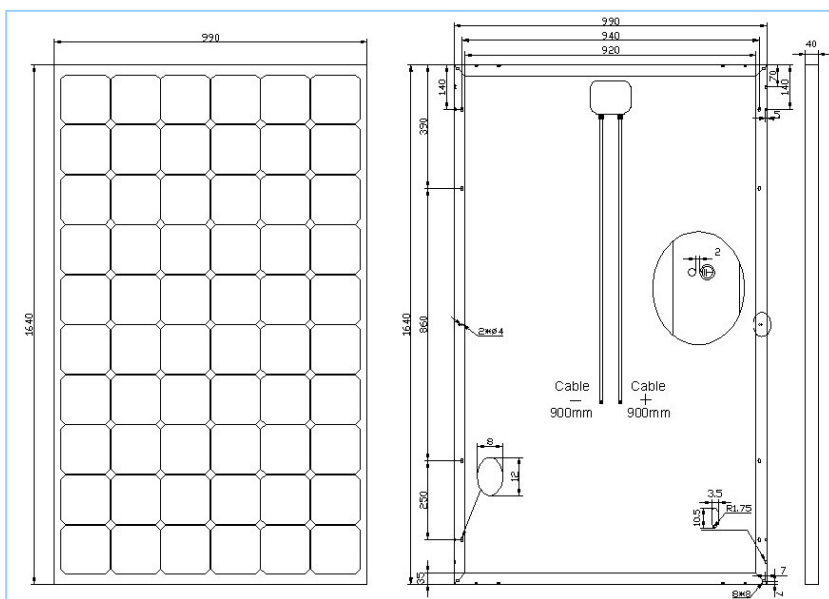
Warranty & Certifications

Warranty	25 year limited power warranty
	10 year limited product warranty
Certifications	IEC 61215, IEC 61730

Packing

Packing	Wooden Box
1*20'	14Pallets/332pcs
1*40'HQ	28Pallets/756pcs

Engineering Drawings



Project Picture