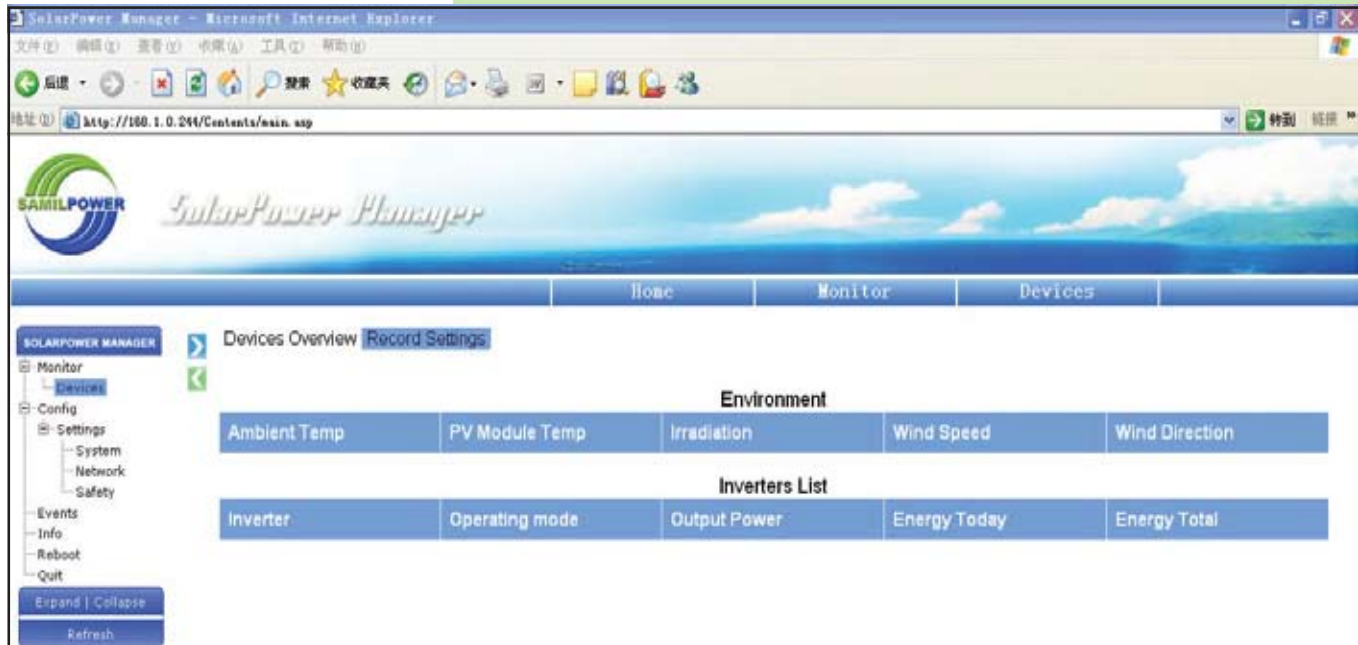


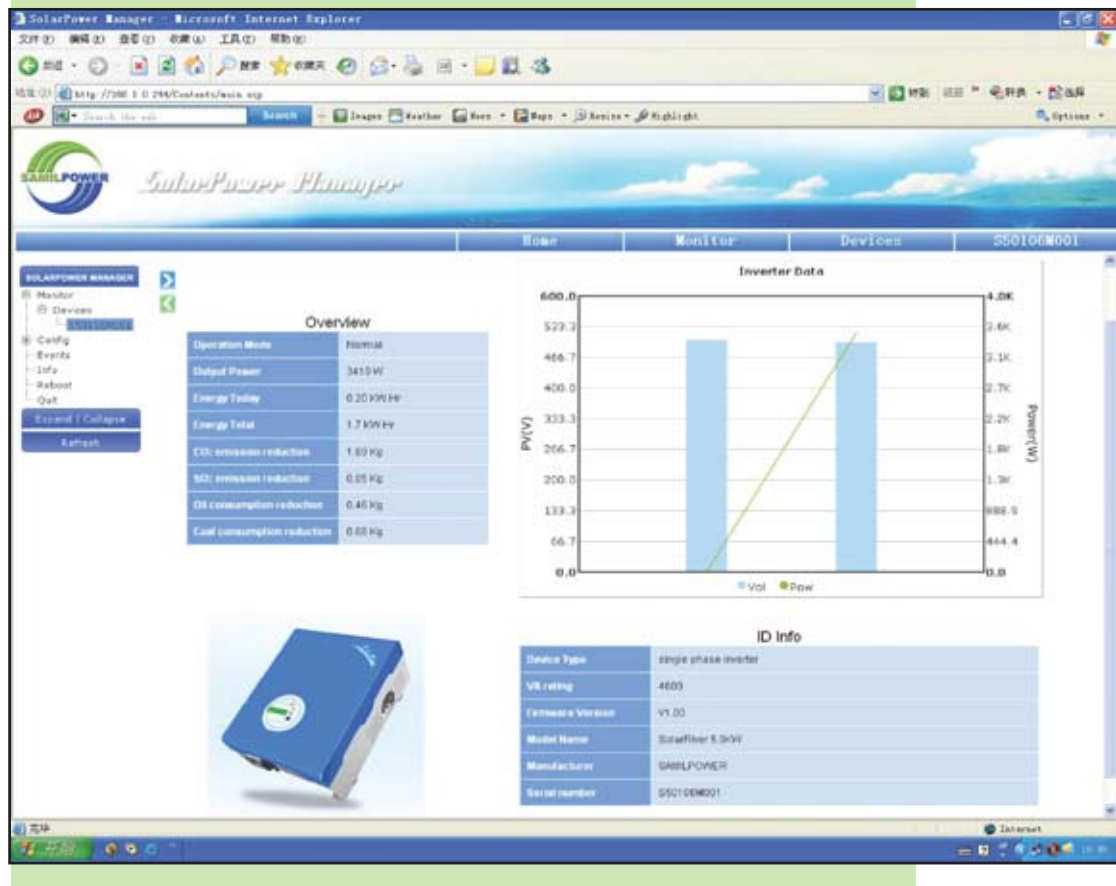
Samil Grid Tie Inverter - - Samil SolarEnvi Monitor

SolarEnvi Monitor



▲ Log in page

▶ Data view via web Interface



Samil Grid Tie Inverter - - Samil SolarEnvi Monitor

SolarEnvi Monitor

(The weather station for your solar power system)



The SolarEnvi Monitor is an environment-monitoring device developed by Samil Power Co., Ltd. specifically for PV plants. With the SolarEnvi Monitor and the external sensors, environmental data can be collected and used to make a comprehensive performance analysis of the PV system.

The SolarEnvi Monitor has a small integrated solar module to measure solar irradiation and two external platinum sensors to measure ambient and module temperature. Wind speed and wind direction can also be measured with optional sensors.

The SolarEnvi Monitor transfers the sensor data to the SolarPower Manager through a RS485 communication interface; the SolarPower Manager acts as a server so that sensor data can be read via the web.



Features

- Comprehensive performance analysis of the PV power system
- Precise acquisition of solar irradiation, module temperature, ambient temperature, wind speed and wind direction values
- Communication with the SolarPower Manager via RS-485
- Easy to install on the PV power system

■ SolarEnvi Monitor

[Datasheet](#)

■ Interfaces

Data logger communication RS-485

■ Sensors

Solar irradiation Precision: $\pm 8\%$

Range: 0~1500W/m²

Module temperature(PT100) Precision: $\pm 0.5^{\circ}\text{C}$

Range: $-20^{\circ}\text{C}\sim+100^{\circ}\text{C}$

Ambient temperature(PT100) Precision: $\pm 0.5^{\circ}\text{C}$

Range: $-20^{\circ}\text{C}\sim+100^{\circ}\text{C}$

Wind speed Precision: $\pm(0.3+0.03V)\text{m/s}$

Range: 0~75m/s

Wind direction Precision: $\pm 3^{\circ}$

Range: 0~360°

■ Power Supply

External power adaptor 5 \pm 0.3V/3W

Protection degree IP65

■ Mechanical Data

Width/height/depth 120X90X50 mm

Weight 500g