

Skywing S Series 300W wind turbine installation instruction manual

Special design for street light use Wind turbine system



CHARACTERISTICS:

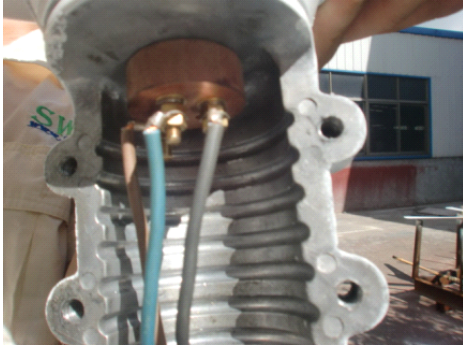
1. Blades: GFRP, high quality tooling and light in weight.
2. Shell: aluminium alloy, good heat dispersion and light in weight.
3. Shakeproof: special design keeps steady working environment.
4. Installation for generator: clamp-on design, easy to install and more reliably.
5. Installation for blades: three pieces of blades share only one bolt, easy to install .

PARAMETER:

	Skywing-400W
Rated power (W):	400
Rated voltage (DCV):	24
Rated current (DCA):	16.7
Rotor diameter (m):	1.5
Material of blades:	GFRP
Rotate direction(check downwind):	clockwise
Start-up wind speed (m/s) :	2.5
Rated wind speed (m/s) :	9.6
Security wind speed (m/s) :	35
Weight of generator (kgs):	18
Weight of blades (per/pcs):	0.35
Type of the generator:	Permanent magnet-synchronous generator
Quantity of blades:	3
Windward mode:	Up -wind

Installation Procedures

1. Please connect the cable to the terminals at the bottom of the generator, and elicit the cable from tower center;



2. Please install the rubber ring onto the tower and complete the other cover (Note: the rubber ring should be installed inside the groove);



3. Please install the blades on the dowel disc;



4. Blades installation: installed the blades on the dowel disc onto the generator shaft;



5. Put the bolt onto the dowel disc groove and connect it with the generator shaft, Fasten it with spanner and rotate the blades clockwise at the same time;



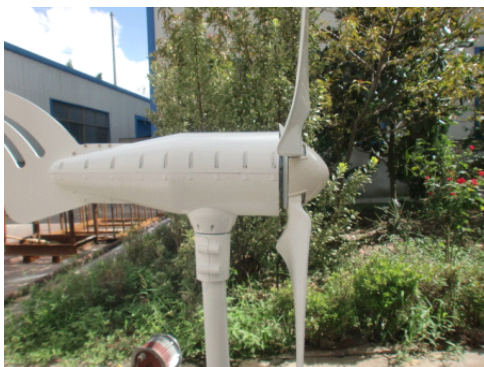
6. Install the nose cone onto the generator;



7. install the tail to the body,use the bolts and screw to fix



8. Connect the cable elicited from the tower to the control er.
Please connect the battery with control er in first;





Cautions

- 1. Thank you for purchasing the S series wind turbine systems. Please refer to the manual before installation and keep it properly;**
- 2. The installation should be done by the experienced technical person. Please refer to the manual strictly;**
- 3. Please make sure the controller will be far away from corrosive gas and wet environment;**
- 4. Please do not open the generator and controller system doing the maintenance without notice or instructions;**
- 5. Please installation the generator and system under no wind weather.**