

# Pure Sine Wave Inverter STI series

STI series is a sine wave power frequency inverter which can convert 12V or 24V DC to 220V AC 50Hz based on full digital and intelligent design. It features high reliability, high efficiency, concise outline, small volume, full protection functions, easy installation and operation. The inverter can be applied in many fields especially for solar photovoltaic power system.

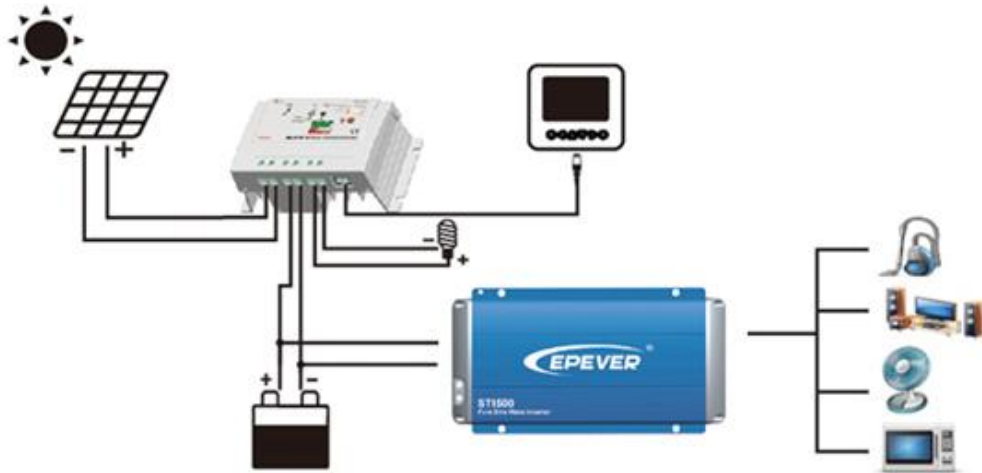


## Features:

- ◆ Complete isolation-type inverter technology, noiseless output
- ◆ Adoption of advanced SPWM technology, pure sine wave output
- ◆ Dynamic current loop control technology to ensure inverter reliable operation
- ◆ Wide DC input voltage range
- ◆ Excellent EMC design
- ◆ Low output harmonic distortion (THD $\leq$ 3%)
- ◆ LED indicators for input voltage range, load power range, normal output & failure state
- ◆ Optional energy saving mode
- ◆ Extensive protections: reverse polarity, short-circuit, overload, under/over input voltage, over-temperature, and inverter's inner fault identification protections
- ◆ Wide working temperature range (industrial level)
- ◆ Continuous operation at full power

## Electronic protection:

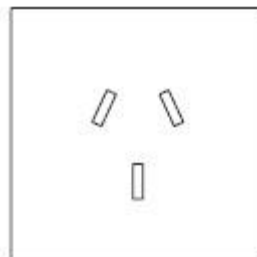
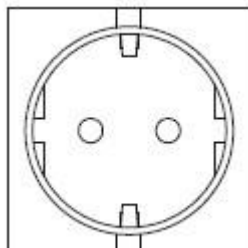
- ◆ Output Short Circuit
- ◆ Inverter abnormal protection
- ◆ Input low voltage
- ◆ Overload
- ◆ Input over voltage
- ◆ Overheating protection



### Details:



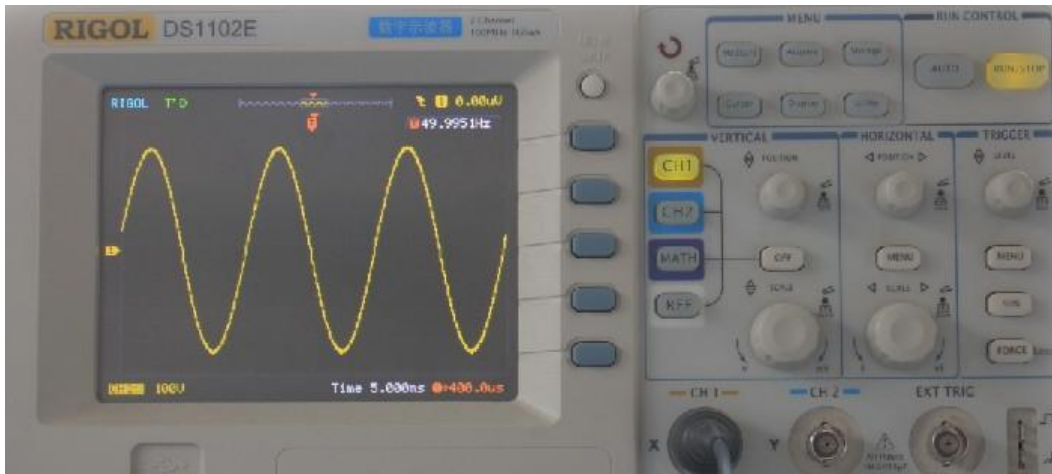
### Output socket (option) :



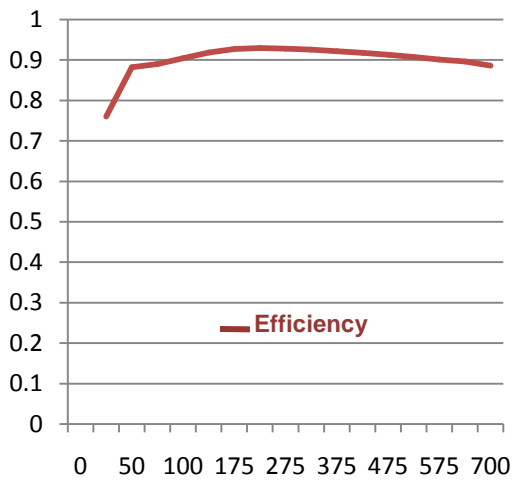
# STI Pure Sine Wave Inverter

Model	STI200/ 12-220	STI200/ 24-220	STI300/ 12-220	STI300/ 24-220	STI500/ 12-220	STI500/ 24-220	STI700/ 24-220	STI1000/ 24-220	STI1000/ 48-220	
Nominal Battery Voltage	12V	24V	12V	24V	12V	24V	24V	24V	48V	
Input Voltage Range	10.5~16V	21~32V	10.5~16V	21~32V	10.5~16V	21~32V	21~32V	21~32V	42~64V	
Consumption no load(ON)	≤5W	≤6W	≤5W	≤7.5W	≤5W	≤7.5W	≤10W	≤10W	≤12W	
Consumption no load (Saving)	≤2W	≤2W	≤2W	≤2W	≤2W	≤2.5W	≤3W	≤3W	≤4W	
Output Voltage	AC220V±3%									
Continuous Power	200VA		300VA		500VA		700VA	1000VA		
Power 10sec	300VA		450VA		750VA		1050VA	1500VA		
Power 1.5sec	400VA		600VA		1000VA		1400VA	2000VA		
Output Mode	Single Phase									
Wave Form	Pure Sine Wave									
Frequency	50Hz±0.5%									
Distortion THD ( resistive load)	THD≤ 3%									
Efficiency at Rated Power	≥81%	≥85%	≥81%	≥85%	≥80%	≥85%	≥87%	≥86%	≥89%	
Max. Efficiency	≥88%	≥89%	≥90%	≥91%	≥91%	≥93%	≥93%	≥93%	≥93%	
Dimension	315*166*101mm				325*187*112mm			335*232*123.3mm	373*232*123.3mm	
Net Weight	4.5kg		5.3kg		7.3kg		9.4kg	11.8kg		
Working Temperature	-20℃~ +50℃									
Humidity	< 95% ( non-condensation )									
Altitude	< 5000m(Derating to operate according to IEC62040 at a height exceeding 1000 m)									

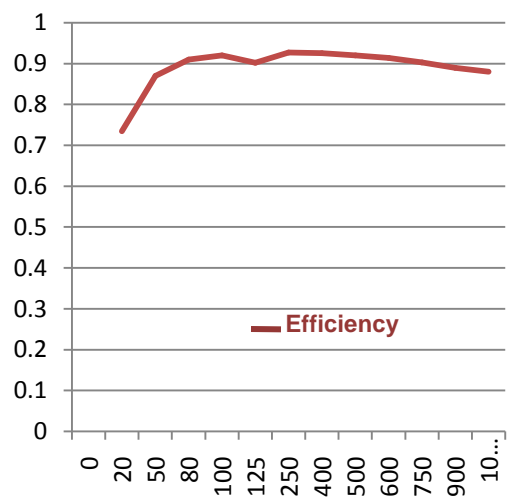
## Wave Form:



## Efficiency Curve :



**STI700-24-220**



**STI1000-24-220**



BEIJING EPSOLAR TECHNOLOGY CO.,LTD.  
 Add: BLDG #18, CO.PARK ,NO.8 HEYING ROAD ,  
 CHANGPING DISTRICT, BEIJING, CHINA  
 Tel: 010-82894962 / 82894112  
 Fax: 010-82894882  
[www.epsolarpv.com](http://www.epsolarpv.com)